

# Eastline Industrial



## -----Eastline Industrial Quick Facts-----

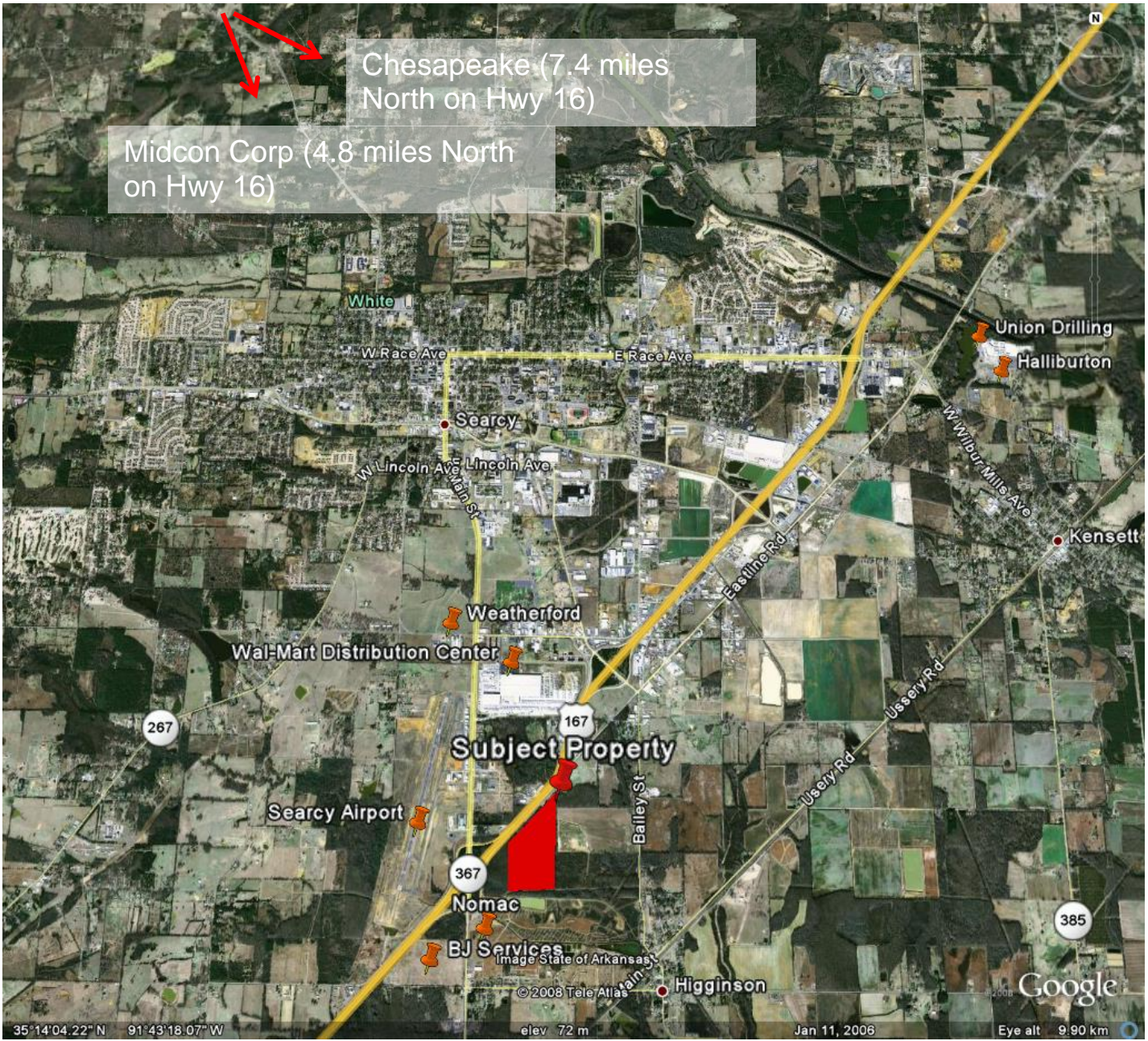
- 1540 Ft. Eastline Frontage
- 2-80 Acres Available
- Lease
- Purchase
- Build to Suit

Located on Eastline Road  
South of exit 44 from 67/167  
Nomac Headquarters and BJ  
Services is located South  
West of property

Lucas Anderson  
(501) 230 – 3160  
lucas@crescentllc.com



Glen Johnson  
(501) 442 – 0089  
glen@crescentllc.com



# Eastline Industrial Preliminary Site Plan



Plats created by Developer for conceptual purposes; developer will consider multiple layout options

# Eastline Industrial – Important Facts

---

## Nomac Drilling Corporation

- Chesapeake Energy's Wholly - Owned Subsidiary
- Ranks 7<sup>th</sup> out of 150 Drilling Companies in the Nation
- Entrance to Company headquarters directly across the street
- Corporate Training Facility
- 50 – 100 trucks daily

## BJ Services

- Publicly traded oil well services company
- District Headquarters directly behind subject property
- Plans to spend \$82 Million on site improvements and equipment for the district headquarters
- Plans to have 120 employees by mid 2009, 250 by mid 2010
- 80 trucks operating out of facility by end of 2008, 120 by Sept 2009

## Wal-Mart Distribution Center

- Searcy's largest employer
- 800 Employees
- 300 – 400 trucks daily
- Main entrance is located 1.25 miles north from subject property

## Weatherford International

- Publicly traded oil well services company
- 125 employees by end of 2008
- 80 – 100 trucks operating out of facility
- Entrance is 1.3 miles North of subject property

## Searcy Municipal Airport

- Aircraft based on the field: 103
- Aircraft operations: average 86/day
- Runway length : 6,008
- Runway width : 100 ft

## Demographics from Subject Property

---

**Searcy, AR 72143**  
**Hwy 367**

**Site Type: Radius**

**Radius: 10 Miles**

<b>Summary</b>	<b>2000</b>	<b>2007</b>	<b>2012</b>
Population	38,032	42,164	45,092
Households	13,956	15,764	17,035
Families	9,966	10,957	11,595
Average Household Size	2.48	2.46	2.44
Owner Occupied HUs	9,601	11,213	12,112
Renter Occupied HUs	4,355	4,551	4,924
Median Age	34.1	35.5	37.0

<b>Trends: 2007-2012 Annual Rate</b>	<b>Area</b>	<b>State</b>	<b>National</b>
Population	1.35%	1.14%	1.30%
Households	1.56%	1.23%	1.33%
Families	1.14%	0.79%	1.08%
Owner HHs	1.55%	1.18%	1.41%
Median Household Income	3.19%	3.36%	3.32%

<b>Households by Income</b>	<b>2000</b>		<b>2007</b>		<b>2012</b>	
	<b>Number</b>	<b>Percent</b>	<b>Number</b>	<b>Percent</b>	<b>Number</b>	<b>Percent</b>
< \$15,000	3,027	21.6%	2,670	16.9%	2,444	14.3%
\$15,000 - \$24,999	2,638	18.8%	2,265	14.4%	1,945	11.4%
\$25,000 - \$34,999	1,976	14.1%	2,122	13.5%	2,150	12.6%
\$35,000 - \$49,999	2,450	17.5%	2,615	16.6%	2,597	15.2%
\$50,000 - \$74,999	2,368	16.9%	3,137	19.9%	3,268	19.2%
\$75,000 - \$99,999	804	5.7%	1,476	9.4%	2,176	12.8%
\$100,000 - \$149,999	441	3.2%	945	6.0%	1,657	9.7%
\$150,000 - \$199,000	88	0.6%	232	1.5%	335	2.0%
\$200,000+	207	1.5%	300	1.9%	460	2.7%
Median Household Income	\$31,414		\$39,500		\$46,220	
Average Household Income	\$41,928		\$52,460		\$62,530	
Per Capita Income	\$15,789		\$20,378		\$24,438	

<b>Population by Age</b>	<b>2000</b>		<b>2007</b>		<b>2012</b>	
	<b>Number</b>	<b>Percent</b>	<b>Number</b>	<b>Percent</b>	<b>Number</b>	<b>Percent</b>
0 - 4	2,309	6.1%	2,706	6.4%	2,886	6.4%
5 - 9	2,418	6.4%	2,494	5.9%	2,650	5.9%
10 - 14	2,493	6.6%	2,415	5.7%	2,697	6.0%
15 - 19	3,586	9.4%	3,512	8.3%	3,628	8.0%
20 - 24	3,922	10.3%	4,124	9.8%	4,052	9.0%
25 - 34	4,728	12.4%	5,560	13.2%	5,508	12.2%
35 - 44	5,178	13.6%	5,504	13.1%	5,602	12.4%
45 - 54	4,441	11.7%	5,229	12.4%	6,137	13.6%
55 - 64	3,373	8.9%	4,417	10.5%	5,167	11.5%
65 - 74	2,759	7.3%	3,067	7.3%	3,264	7.2%
75 - 84	1,986	5.2%	2,116	5.0%	2,292	5.1%
85+	840	2.2%	1,019	2.4%	1,209	2.7%

<b>Race and Ethnicity</b>	<b>2000</b>		<b>2007</b>		<b>2012</b>	
	<b>Number</b>	<b>Percent</b>	<b>Number</b>	<b>Percent</b>	<b>Number</b>	<b>Percent</b>
White Alone	34,971	91.9%	38,063	90.3%	40,266	89.3%
Black Alone	1,854	4.9%	2,460	5.8%	2,799	6.2%
American Indian Alone	123	0.3%	149	0.4%	170	0.4%
Asian Alone	133	0.3%	199	0.5%	261	0.6%
Pacific Islander Alone	10	0.0%	12	0.0%	14	0.0%
Some Other Race Alone	401	1.1%	598	1.4%	784	1.7%
Two or More Races	541	1.4%	682	1.6%	799	1.8%
Hispanic Origin (Any Race)	801	2.1%	1,197	2.8%	1,569	3.5%